

# Elite Bowlers Tour Mercury 37'



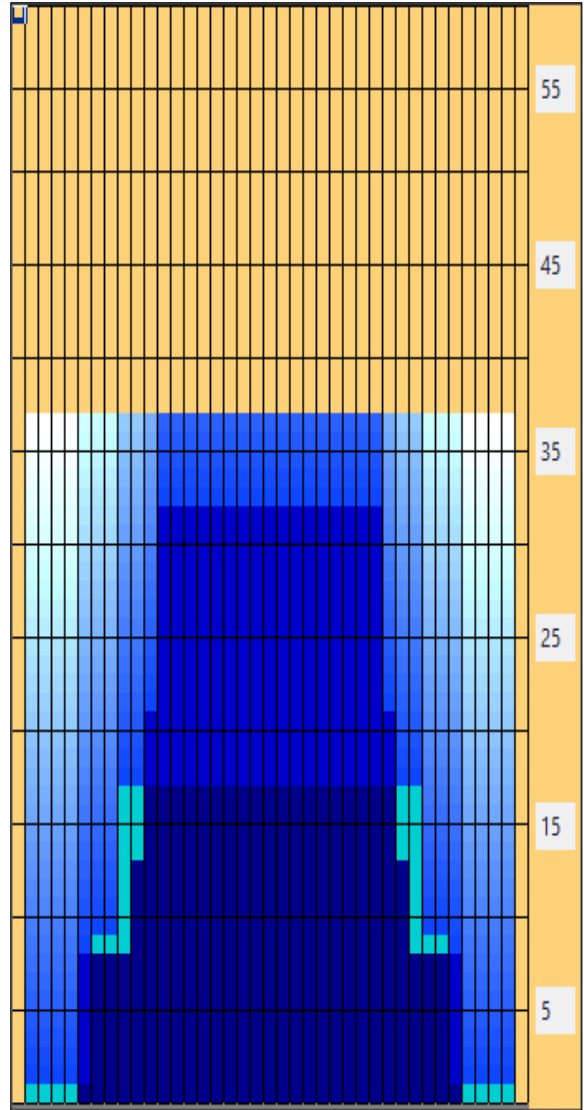
<b>Oil Pattern Distance:</b>	<b>37 Feet</b>	<b>Reverse Brush Drop:</b>	<b>37 Feet</b>	<b>Oil Per Board:</b>	<b>50 uL</b>
<b>Forward Oil Total:</b>	<b>11.2 mL</b>	<b>Reverse Oil Total:</b>	<b>11.45 mL</b>	<b>Volume Oil Total:</b>	<b>22.65 mL</b>
<b>Forward Boards Crossed:</b>	<b>224 Boards</b>	<b>Reverse Boards Crossed:</b>	<b>229 Boards</b>	<b>Total Boards Crossed:</b>	<b>453 Boards</b>

	Start	Stop	Loads	Mics	Speed	Crossed	Start	End	Feet	T.Oil
1	2L	2R	2	50	14	74	0.0	1.9	1.9	3700
2	7L	7R	3	50	18	81	1.9	9.5	7.6	4050
3	9L	9R	3	50	18	69	9.5	17.1	7.6	3450
4	2L	2R	0	50	18	0	17.1	23.0	5.9	0
5	2L	2R	0	50	22	0	23.0	32.0	9.0	0
6	2L	2R	0	50	30	0	32.0	37.0	5.0	0

Conditioner:  
Type In or Select One

Forward  
Reverse  
Combined  
Buff

	Start	Stop	Loads	Mics	Speed	Crossed	Start	End	Feet	T.Oil
1	2L	2R	0	40	30	0	37.0	32.0	-5.0	0
2	12L	12R	3	50	26	51	32.0	21.0	-11.0	2550
3	11L	11R	3	50	18	57	21.0	13.4	-7.6	2850
4	10L	10R	3	50	14	63	13.4	7.5	-5.9	3150
5	6L	6R	2	50	10	58	7.5	4.7	-2.8	2900
6	2L	2R	0	50	10	0	4.7	0.0	-4.7	0



Item	3L-7L:18L-18R	8L-12L:18L-18R	13L-17L:18L-18R	18L-18R:17R-13R	18L-18R:12R-8R	18L-18R:7R-3R
Description	Outside Track:Middle	Middle Track:Middle	Inside Track:Middle	Middle: Inside Track	Middle:Middle Track	Middle:Outside Track
Track Zone Ratio	5.59	1.46	1	1	1.46	5.59

