

Elite Bowlers Tour Pan Handler 46'



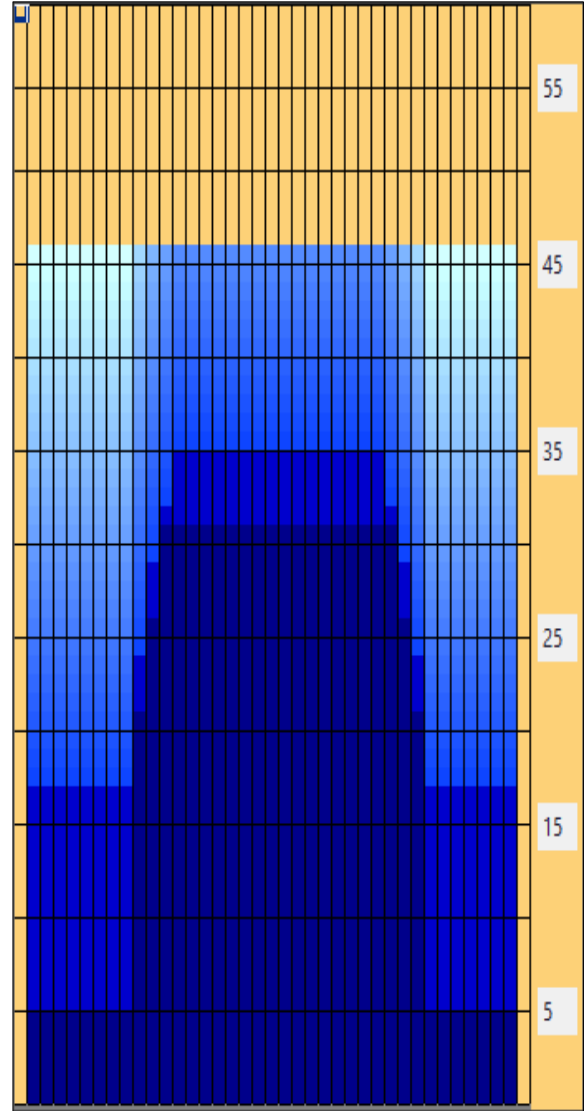
Oil Pattern Distance:	46 Feet	Reverse Brush Drop:	46 Feet	Oil Per Board:	50 uL
Forward Oil Total:	17.8 mL	Reverse Oil Total:	10.7 mL	Volume Oil Total:	28.5 mL
Forward Boards Crossed:	356 Boards	Reverse Boards Crossed:	214 Boards	Total Boards Crossed:	570 Boards

	Start	Stop	Loads	Mics	Speed	Crossed	Start	End	Feet	T.Oil
1	2L	2R	4	50	14	148	0.0	5.9	5.9	7400
2	10L	9R	2	50	18	44	5.9	11.0	5.1	2200
3	10L	9R	2	50	18	44	11.0	16.1	5.1	2200
4	10L	9R	2	50	18	44	16.1	21.2	5.1	2200
5	11L	10R	2	50	18	40	21.2	26.3	5.1	2000
6	12L	11R	2	50	18	36	26.3	31.4	5.1	1800
7	2L	2R	0	50	18	0	31.4	38.0	6.6	0
8	2L	2R	0	50	22	0	38.0	46.0	8.0	0

	Start	Stop	Loads	Mics	Speed	Crossed	Start	End	Feet	T.Oil
1	2L	2R	0	40	30	0	46.0	35.0	-11.0	0
2	13L	12R	1	50	22	16	35.0	31.9	-3.1	800
3	12L	11R	1	50	18	18	31.9	29.4	-2.5	900
4	11L	10R	2	50	18	40	29.4	24.3	-5.1	2000
5	10L	9R	3	50	18	66	24.3	16.7	-7.6	3300
6	2L	2R	1	50	14	37	16.7	14.8	-1.9	1850
7	2L	2R	1	50	14	37	14.8	12.9	-1.9	1850
8	2L	2R	0	50	14	0	12.9	0.0	-12.9	0

Conditioner:
Type In or Select One

- Forward
- Reverse
- Combined
- Buff



Item Description	3L-7L:18L-18R Outside Track:Middle	8L-12L:18L-18R Middle Track:Middle	13L-17L:18L-18R Inside Track:Middle	18L-18R:17R-13R Middle: Inside Track	18L-18R:12R-8R Middle:Middle Track	18L-18R:7R-3R Middle:Outside Track
Track Zone Ratio	3.83	1.69	1	1	1.35	3.83

